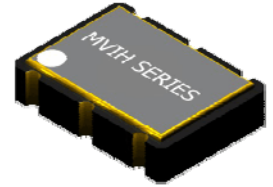


MVIH Series VCXO



- Hermetically Sealed Ceramic SMD Package
- +2.5VDC, +3.3VDC, or +5.0VDC Supply Voltage
- Tape and Reel Available
- RoHS Compliant



Supply Voltage (Vdd)	+2.5VDC ±10%	+3.3VDC ±10%	+5.0VDC ±10%
Frequency Range	1.544MHZ TO 180.000MHZ		1.544MHZ TO 50.000MHZ
Frequency Stability at +25°C	±10 ppm		
Frequency Stability (Inclusive of Temp., Load, Voltage and Aging)	(See Part Number Guide for Options)		
Operating Temp. Range	(See Part Number Guide for Options)		
Storage Temp. Range	-40°C to +85°C		
Supply Current	60mA max	60mA max	85mA max
Load	15pF	30pF	30pF
Output	HCMOS		
Logic "0"	10% Vdd max		
Logic "1"	90% Vdd min		
Symmetry (50% of waveform)	40%/60%		
Rise / Fall Time (10% to 90%)	10nSec max		
Start Time	10mSec max		
Control Voltage	1.25 VDC ±1.00 VDC	1.65 VDC ±1.50 VDC	2.50 VDC ±2.00 VDC
Linearity	(See Part Number Guide for Options)		
Pullability	(See Part Number Guide for Options)		
Tristate	Logic "0" or Ground Osc Disabled High Impedance on Pin 4		
	Logic "1" (or no connect) Output Enabled		

Environmental & Mechanical Detail

Shock	MIL-STD-883, Meth 2002, Cond B
Solderability	MIL-STD-883, Meth 2003
Vibration	MIL-STD-883, Meth 2007, Cond A
Reflow Solderability	260°C for 10 seconds
Gross Leak Test	MIL-STD-883, Meth 1014, Cond C
Fine Leak Test	MIL-STD-883, Meth 1014, Cond A

Marking Detail

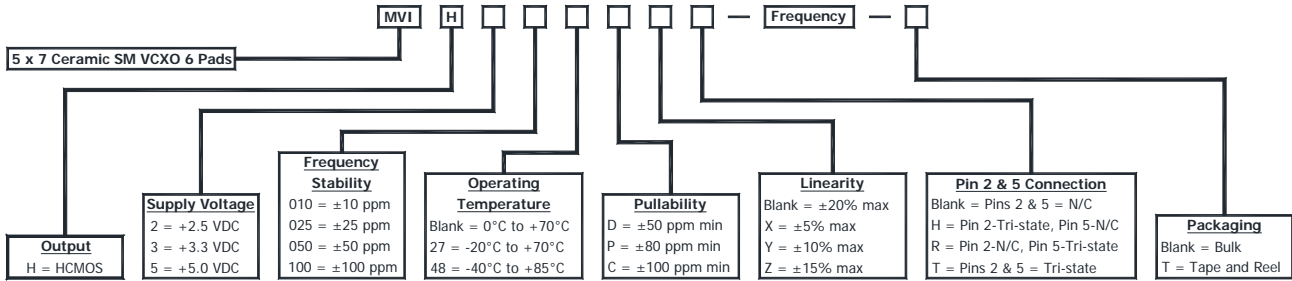
Line 1 = MXXXXX		
M	=	MMD
XXXXX	=	Frequency in MHZ
Line 2 = SYWWL		
S	=	Internal Code
YYWW	=	4 Numerical Digit Date Code (Year / Week) Jan 27 2011=1105
L	=	Denotes RoHS Compliant
Line 3 = XXXXX		
Internal use only		
May vary with lots		
Black dot to denote Pin 1		



MMD MONITOR/QUARTZEK – An ILSI Company,
 5458 Louie Lane, Reno, NV 89511
 Phone: (775) 851-8880, www.mmdcomp.com

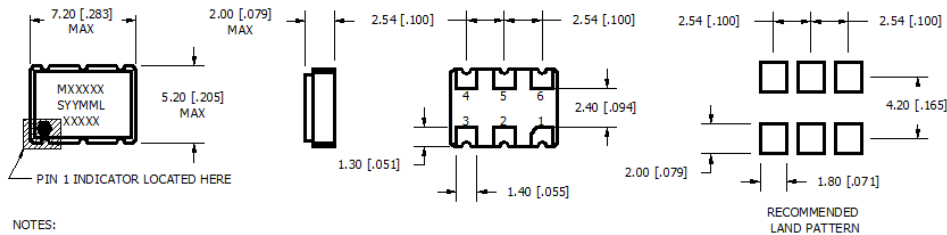


Part Number Guide



Please Consult with MMD Sales Department for any other Parameters or Options

Mechanical Details



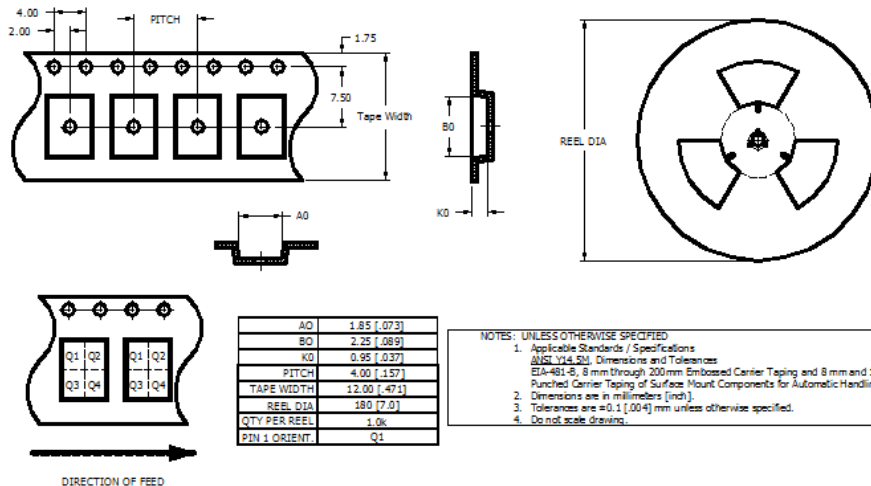
- NOTES:
1. DIMENSIONS IN BRACKETS ARE IN INCHES.
 2. AN EXTERNAL BYPASS CAPACITOR IS RECOMMENDED.
 3. PADS PLATING:
BASE OR UNDER CONDUCTOR; Ni THICKNESS 1.3um TO 8.8um.
FINAL PLATING; Au (99.9%) LESS THAN 0.5um, 0.3um TYP.

PIN CONNECTIONS	
PIN 1	VOLTAGE CONTROL
PIN 2	SEE CHART BELOW
PIN 3	GROUND
PIN 4	OUTPUT
PIN 5	SEE CHART BELOW
PIN 6	SUPPLY VOLTAGE

PIN 2 & 5 CONNECTION		
OPTION*	PIN 2	PIN 5
BLANK	N/C	N/C
H	TRI-STATE	N/C
R	N/C	TRI-STATE
T	TRI-STATE	TRI-STATE

*PER PART NUMBER GUIDE

Tape & Reel Dimensions



- NOTES: UNLESS OTHERWISE SPECIFIED
1. Applicable Standards / Specifications: ASSEMBLY: Dimensions and Tolerances: EIA-481-B, 8mm through 200mm Embossed Carrier Taping and 8mm and 12mm Punched Carrier Taping of Surface Mount Components for Automatic Handling.
 2. Dimensions are in millimeters (mm).
 3. Tolerances are ±0.1 [0.004] mm unless otherwise specified.
 4. Do not scale drawing.



MMD MONITOR/QUARTZEK – An ILSI Company,
 5458 Louie Lane, Reno, NV 89511
 Phone: (775) 851-8880, www.mmdcomp.com

