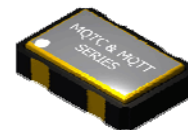


MQTC & MQTT Series Ceramic SMD Oscillator



- Same day Shipping Available
- 3.2 X 5mm SMD Package
- RoHS Compliant
- Tape & Reel package Available



Frequency Range	1.000MHZ to 125.000MHZ		
Frequency Stability (Inclusive of Temperature, Load and Voltage)	See Part Number Guide		
Aging @ +25°C	±5 ppm per year max		
Operating Temperature Range	See Part Number Guide		
Storage Temperature Range	-55°C to +125°C		
Supply Voltage (Vdd)	+2.5 VDC ±10%	+3.3 VDC ±10%	+5.0 VDC ±10%
Supply Current	1.000MHZ to 40.000MHZ	14mA max	15mA max
	40.100MHZ to 70.000MHZ	20mA max	22mA max
	70.100MHZ and above	30mA max	30mA max
Load	15pF	30pF	10 TTL or 50pF
Output Waveform (Option)	TTL		CMOS
Logic "0"	0.4V max		10% Vdd max
Logic "1"	2.4 V min		90% Vdd min
Rise/Fall Time (20% to 80% Levels)	5nSec max	5nSec max	7nSec max
Start Up Time	10mSec max		
Duty Cycle	1.000MHZ to 70.000MHZ	45%/55% (TTL @ 1.4V Level / CMOS @ 50% Waveform)	
	70.100MHZ and above	40%/60% (TTL @ 1.4V Level / CMOS @ 50% Waveform)	
Jitter (Peak to Peak)	25pS max		
Tristate	VOH = 70% of Vdd min or No Connection to Enable Output VOL = 30% of Vdd max or grounded to Disable Output (High Impedence)		

Mechanical & Environmental Detail

Shock	MIL-STD-883, Method 2002 Cond B
Solderability	MIL-STD-883, Method 2003
Solvent Resistance	MIL-STD-202, Method 215
Vibration	MIL-STD-883, Method 2007, Cond A
Gross Leak Test	MIL-STD-883, Method 1014, Cond C
Fine Leak Test	MIL-STD-883, Method 1014, Cond A2
MSL	Level 1 per IPC/JEDEC J-STD 20

Marking Detail

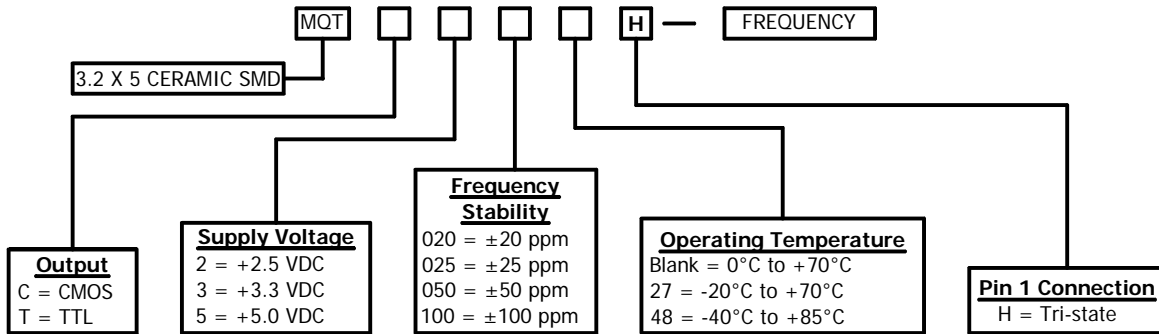
Line 1 = MXXXXX	
M	= MMD
XXXXX	= Frequency in MHZ
Line 2 = SYWWL	
S	= Internal Code
YYWW	= 4 Digit Date Code (Year / Week)
L	= Denotes RoHS Compliant
Line 3 = XXXXX	
Internal use only	
May vary with lots	
Black dot to denote Pin 1	



MMD Monitor/Quartztek
 30400 Esperanza, Rancho Santa Margarita, CA, 92688
 Phone: (949) 709-5075, Fax: (949) 709-3536, www.mmdcomp.com
 Sales@mmdcomp.com

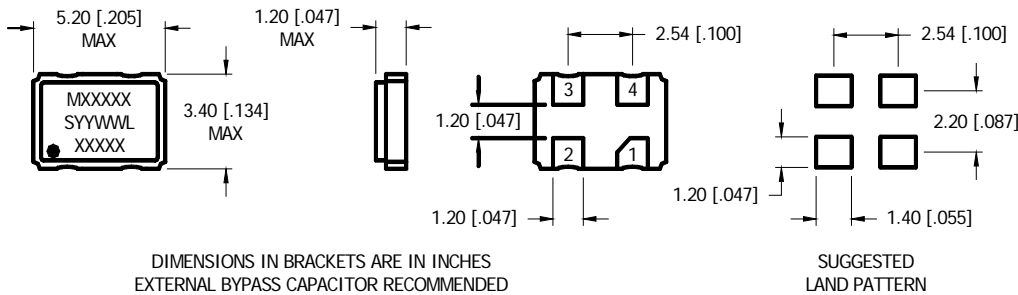


Part Number Guide

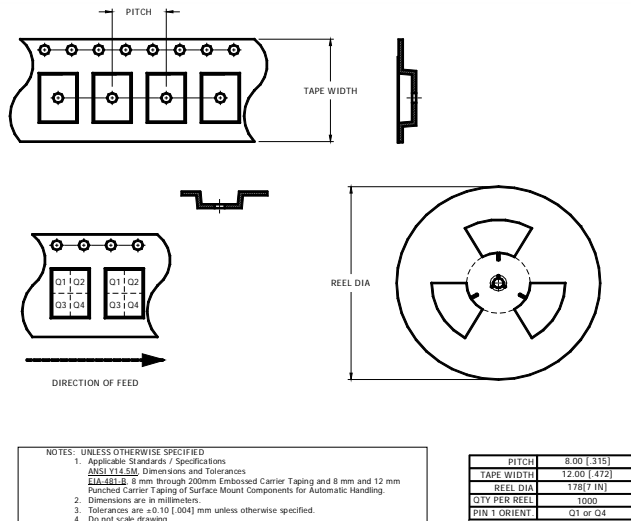


PLEASE CONSULT WITH MMD SALES DEPARTMENT FOR ANY OTHER PARAMETERS OR OPTIONS

Mechanical Details



Tape & Reel Dimensions



MMD Monitor/Quartztek
30400 Esperanza, Rancho Santa Margarita, CA, 92688
Phone: (949) 709-5075, Fax: (949) 709-3536, www.mmdcomp.com
Sales@mmdcomp.com

