

I Series Crystal



- 6.0mm x 3.5 mm 2 Pads Ceramic Package
- Tight Tolerance and Stability
- Wide Frequency Range
- Tape and Reel Packaging



| | |
|---------------------------------|--|
| Frequency Range | 10.000MHZ to 80.000MHZ |
| Frequency Tolerance / Stability | (See Part Number Guide for Options) |
| Operating Temperature Range | (See Part Number Guide for Options) |
| Storage Temperature | -40°C to +85°C |
| Aging | ±5ppm per year max |
| Shunt Capacitance | 7pF max |
| Load Capacitance | 20pF Standard (See Part Number Guide for Options) |
| Equivalent Series Resistance | See ESR Chart |
| Mode of Operation | Fundamental / 3 rd OT |
| Drive Level | 100µW max |
| Insulation Resistance | 500 M ohms min at 100VDC ±15VDC |

ESR Chart

| Frequency Range | ESR (Ohms) | Mode / Cut |
|------------------------|------------|------------------------|
| 10.000MHZ to 10.999MHZ | 100 max | Fund / AT |
| 11.000MHZ to 11.999MHZ | 80 max | Fund / AT |
| 12.000MHZ to 15.999MHZ | 60 max | Fund / AT |
| 16.000MHZ to 39.999MHZ | 40 max | Fund / AT |
| 40.000MHZ to 80.000MHZ | 70 max | 3 rd OT/ AT |

Environmental & Mechanical Detail

| | |
|--------------------|-----------------------------------|
| Shock | MIL-STD-883, Method 2002 Cond B |
| Solderability | MIL-STD-883, Method 2003 |
| Solvent Resistance | MIL-STD-202, Method 215 |
| Vibration | MIL-STD-883, Method 2007, Cond A |
| Gross Leak Test | MIL-STD-883, Method 1014, Cond C |
| Fine Leak Test | MIL-STD-883, Method 1014, Cond A2 |
| MSL | Level 1 per IPC/JEDEC J-STD 20 |

Marking Detail

| |
|------------------------------|
| Line 1: MXX.XXX |
| XX.XXX = Frequency in MHz |
| Line 2: SYMCCCL |
| S = Internal Code |
| YM = Date Code (Year/Month) |
| CC = Crystal Parameters Code |
| L = Denotes RoHS Compliant |

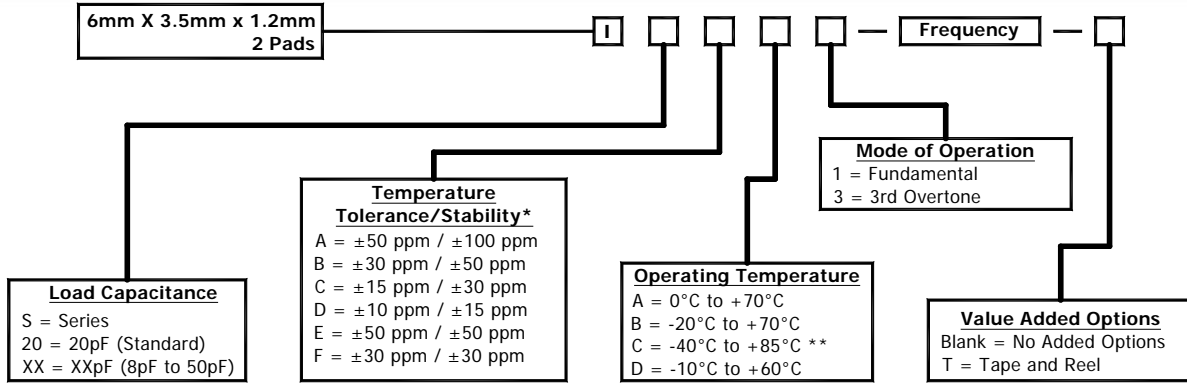


MMD Monitor/Quartztek
 30400 Esperanza, Rancho Santa Margarita, CA, 92688
 Phone: (949) 709-5075, Fax: (949) 709-3536, www.mmdcomp.com
 Sales@mmdcomp.com



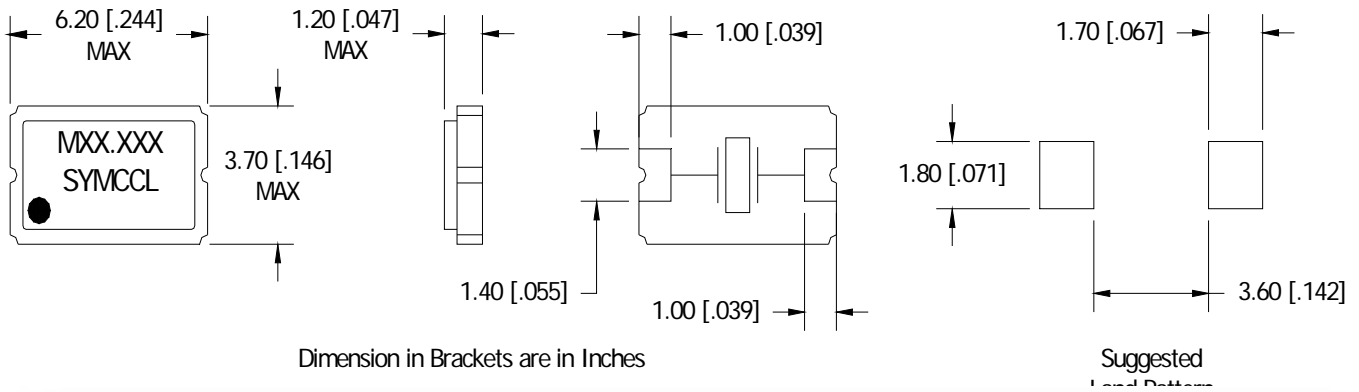
| | |
|-----------|------------|
| Revision: | 09/01/10 G |
|-----------|------------|

Part Number Guide

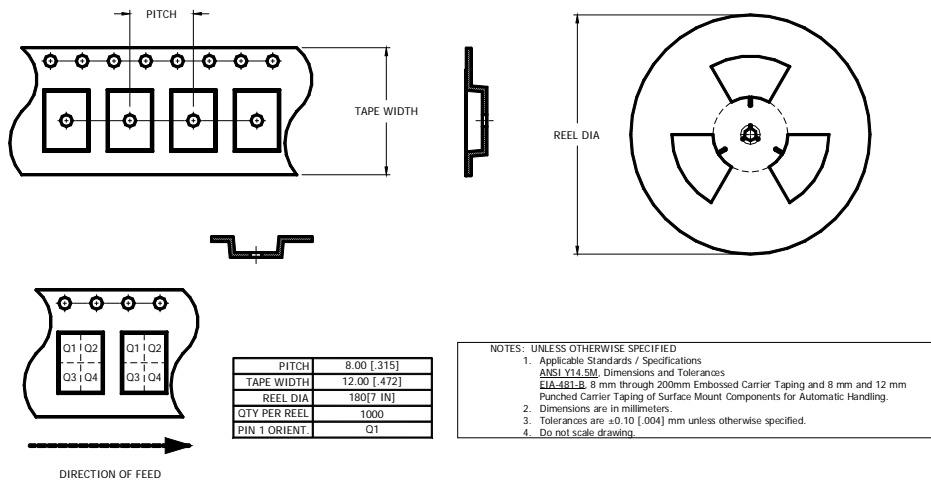


* Please consult with MMD sales department for any other parameters or options.
** Not all Frequency Tolerance/Stability options available at this temperature range.

Mechanical Details



Tape & Reel



MMD Monitor/Quartztek
30400 Esperanza, Rancho Santa Margarita, CA, 92688
Phone: (949) 709-5075, Fax: (949) 709-3536, www.mmdcomp.com
Sales@mmdcomp.com



Revision: 09/01/10 G